

WESTLAKE MARINE SERVICES NIG. LTD.



Office Address: No 3, Otunba Adedoyin Ogungbe Crescent,
Off Bisola Durosimi Etti Road, Lekki Phase 1, Lekki, Lagos.
Phone: +234 909 215 6954
email: enquiries@westlakegrouppltd.com
website: www.westlakegrouppltd.com

FLEX FIGHTER 2020

Crew Boat • Security Boat • Anytime • Anywhere



LORD JEFFERY

...engineered for speed and security

VESSEL OVERVIEW

Vessel Type: Aluminium Monohull Fast Multi-Role Security Vessel
Designed and built by Penguin Shipyard based on the Caterpillar-Powered Flex-40SC
Classification: BV I X HULL • MACH, Crew Boat, Sea Area 3
Safety Regulation: BV and Panama Flag State requirements
Regs, Codes, Guidelines: MARPOL, SOLAS, IMDG

HULL PARTICULARS

Length Overall: 40.00 m
Breadth Moulded: 7.60 m
Depth Moulded: 3.65 m
Loaded Draft: 1.89 m
Bow Transfer Platform for Personnel: Fitted

CARGO DECK

Clear Deck Area: 93 sqm
Deck Cargo Capacity: 60 MT
Deck Strength: 2.0 MT / sqm
Deck Dimensions: 16.9 m x 5.5 m
Cargo Railing Height: 1.0 m
Deck Crane: Pallinger PK4501M, 500 kg @ 5.5 m outreach
Deck Store: Fitted
Remarks: Adequate cargo retainers and lashing lugs on both sides for securing deck cargo

TONNAGE

GRT: 279 MT
NRT: 83 MT
DWT: 131 MT

MAIN MACHINERY

Number of Main Engines: 3 units with resilient mountings
Make / Type: Caterpillar C32 ACERT IMO Tier 2
Total BHP: 3 x 1450 BHP @ 2300 rpm
Propellers: 3 x \square xed pitch, Ni-Al-Bronze, 5 blades
Bow Thruster: 1 unit electro-hydraulic @ 100 HP

PERFORMANCE

Maximum Speed: 28 knots @ 100% MCR
Maximum Fuel Consumption: 878 L / hr
Economical Speed: 26 knots @ 85% MCR
Economical Fuel Consumption: 765 L / hr

GENERATORS AND AUXILIARY ENGINES

Generators: 3 x Caterpillar SR4 Alternator 86 kW
Prime Movers: 3 x 125 BHP @ 1500 rpm
Make / Type: Caterpillar C4.4
Vessel Power Supply: 415/220 Volt AC, 50 Hz, 3-phase + 24 Volt DC
Shore Power / Reefer Sockets: 1 / 4

SAFETY EQUIPMENT

Life Rafts: 3 x 25-man each side as per SOLAS
Life Jackets: 69 on board as per SOLAS
Life Buoys: 8 on board as per SOLAS
Scrambling Nets: 2 units
Other Equipment: Pyrotechnics, line-throwing apparatus
Rescue Zone: Port and Starboard

EMERGENCY RESPONSE FEATURES

1 x external FiFi monitor with remote clutch and control @ 600 cbm per hour
Aerosol \square re extinguishing system
In \square atable workboat with diesel outboard motor

STANDARD FLEX FIGHTER FEATURES

All-Round Wheelhouse Ballistic Protection:
- Wheelhouse Windows (STANAG L1 or equivalent)
- Full Wheelhouse Cladding (STANAG L1 or equivalent)
Gun Mounts with Ballistic Shields (1 x forward and 2 x aft)
* Weapons not included

ACCOMMODATION AND STORAGE

MAIN DECK

Passenger Seats: 50 pax
Passenger Toilets: 2 cubicles with showers
Entertainment System: 1 x LCD TV screen
Security Personnel Cabins / Total Bunks: 3 / 12 (3 x 4-man)
Security Personnel Shower Rooms: 2 cubicles
Deck Command Centre with Radar Monitor, Fitted
CCTV Monitor, VHF, Heading Repeater and GPS Repeater.
Arms Locker: Fitted

BELOW MAIN DECK

Crew Cabins / Total Bunks: 4 / 8
(2 x 1-man, 1 x 2-man, 1 x 4-man)
Crew Toilet: 1 cubicle with shower
Entertainment System: 1 x LCD TV screen
Crew Mess and Galley: Fitted
Crew Washer and Dryer: Fitted
Separate Walk-In Freezer and Chiller: Fitted
Dry Store: Fitted
Work Bench: Fitted

ELECTRONICS AND CONTROLS

GMDSS: Sea Area A1+A2
VHF: Sailor 6222
MF/HF Radio: Sailor 6310
BNWAS: LeGuardian2025
Marine Radar: HALO-6
GPS: Simrad P2005
Depth / Echo Sounder: SonarHub
Gyro Compass: Simrad RGC50
Magnetic Compass: Riviera 6"
Navtex Receiver: JMC NT1800
Public Address / Intercom System: Vingtor CTB
Search Lights: 3 x 1000W
EPIRB: McMurdo E8
SART: McMurdo S5A
AIS: Simrad V5035
Night Vision Camera: FLIR M364
CCTV: 10 units fitted
(5 x Exterior, 1 x Bridge, 1 x Passenger Area, 1 x Mess Room, 2 x Engine Room)

TANK CAPACITIES

Fuel Oil: 86,000 L
Fresh Water: 30,000 L
Oily Bilge: 600 L
Lube Oil: 450 L
Gear Oil: 450 L
Hydraulic Oil: 450 L
Fuel Oil Sludge: 500 L
Fuel Oil Purifier: Heavy duty, self-cleaning unit
IMO-Approved Sewage Treatment Plant: Fitted for 15 pax
IMO-Approved Oily Water Separator: 15 ppm
Water maker: 3.4 MT / day

ELECTRONIC FUEL MANAGEMENT SYSTEM

FUELTRAX electronic fuel management system: **NEW IN 2020**
- Coriolis meters for main engines and generators: 12 units
- Coriolis meter for bunker line: 1 unit

FLEX FIGHTER OPTIONS (additional costs apply)

Additional ballistic protection
Additional gun mounts

FLEX FIGHTER

Crew Boat • Security Boat • Anytime • Anywhere



Forward bridge console with all-round view



Aft bridge console with remote FiFi controls



Main passenger deck with reclining seats and security cabins



Comfortable crew rest area



Deck Command Centre with threat monitoring system

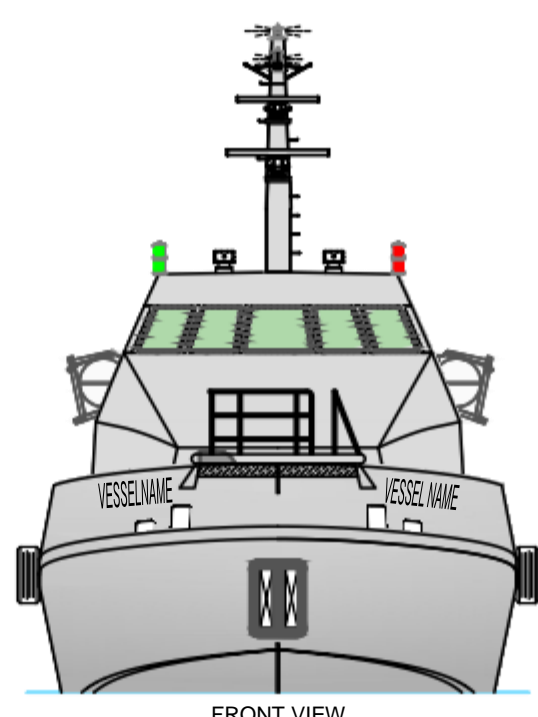
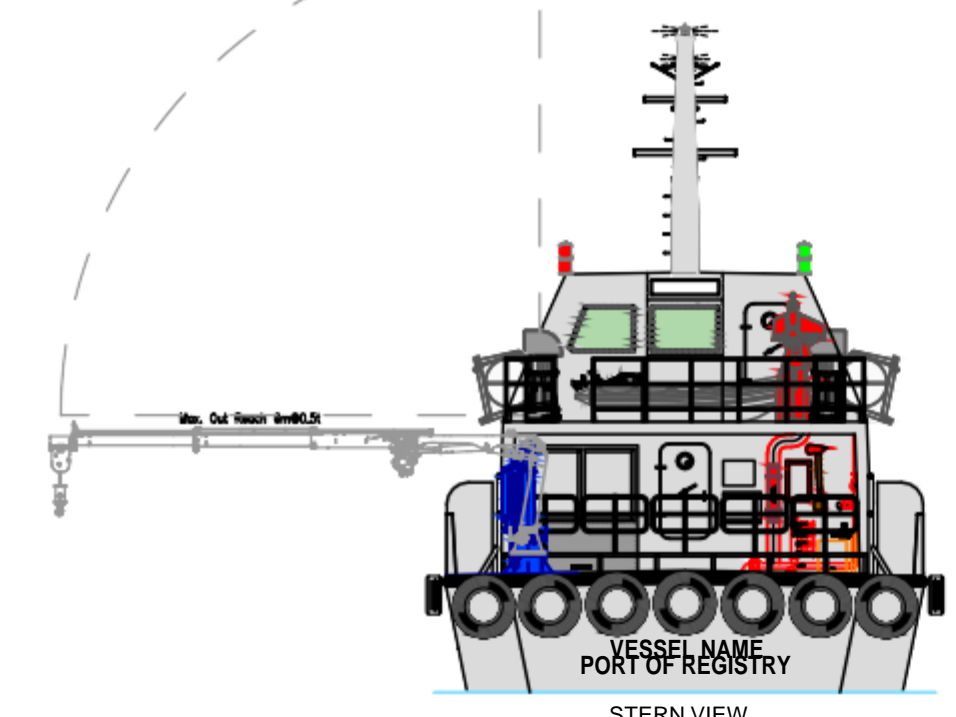
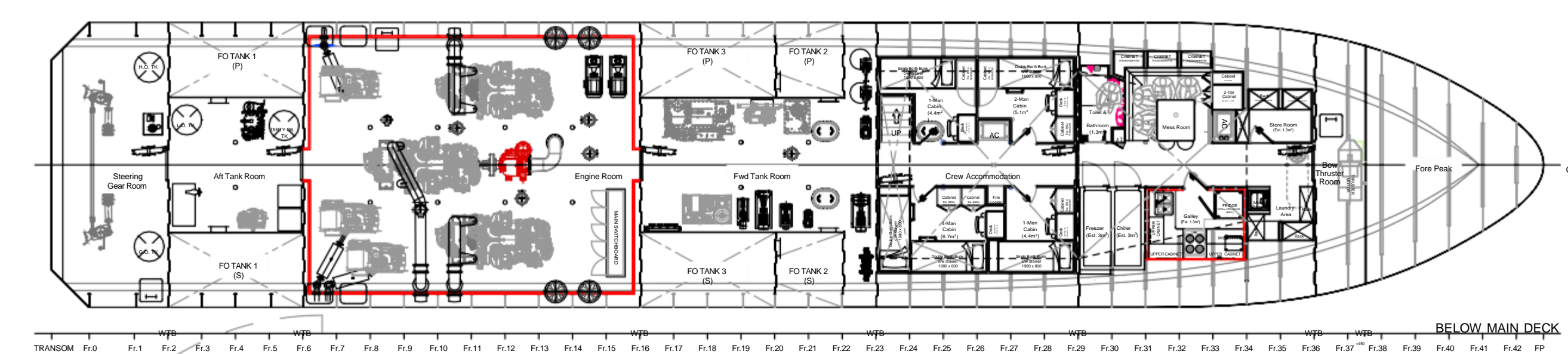
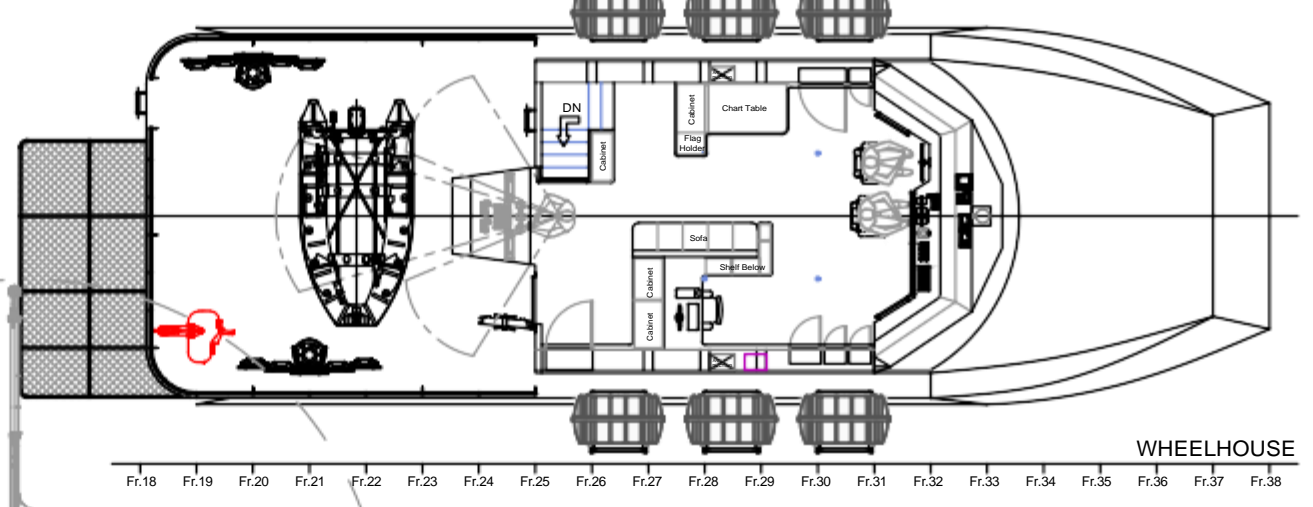
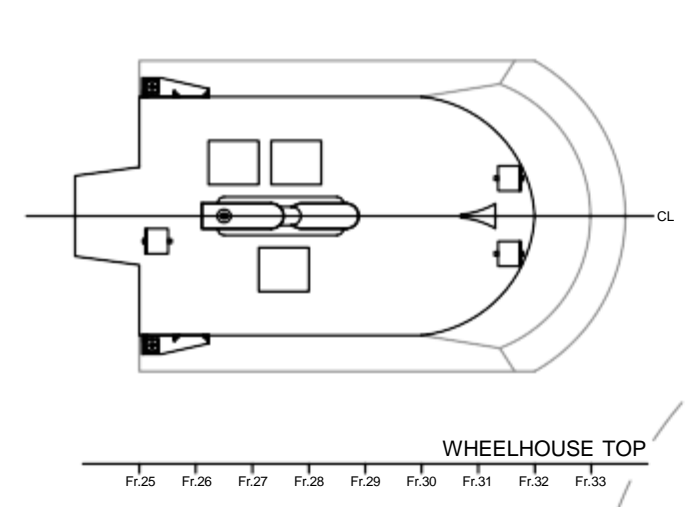
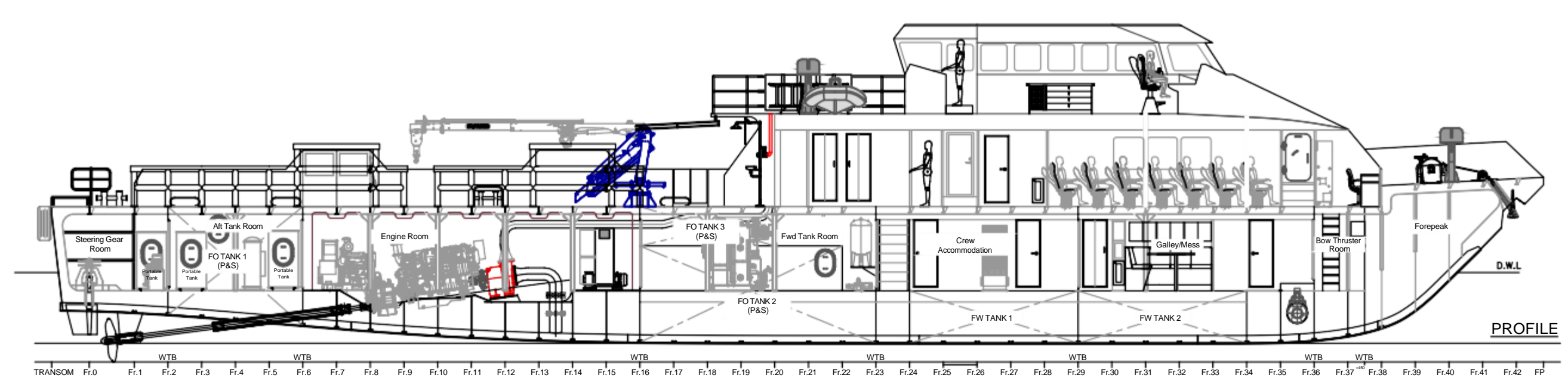
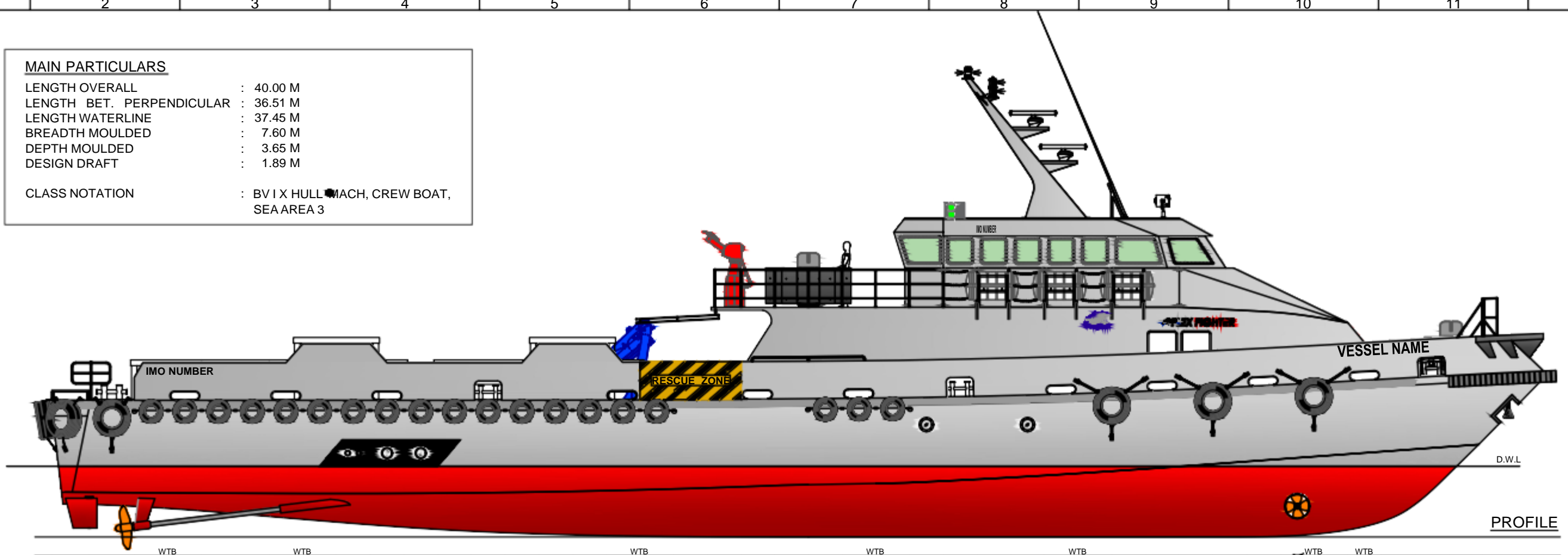


Spacious engine room

MAIN PARTICULARS

LENGTH OVERALL : 40.00 M
 LENGTH BET. PERPENDICULAR : 36.51 M
 LENGTH WATERLINE : 37.45 M
 BREADTH MOULDED : 7.60 M
 DEPTH MOULDED : 3.65 M
 DESIGN DRAFT : 1.89 M

CLASS NOTATION : BV I X HULL MACH. CREW BOAT, SEA AREA 3



PENGUIN SHIPYARD INTERNATIONAL PTE LTD
 18 Tuas Basin Link, Singapore 638784. www.penguin.com.sg

This drawing and the information contained herein is supplied in good faith and without guarantee, on the understanding that it is the exclusive property of Penguin International Limited and its subsidiaries. It must not be used or reproduced, in whole or in part, without our permission in writing.

Project : Flex Fighter
 Title : General Arrangement
 Flex-40SC
 Date : 30-10-2019
 Sheet : 1 of 1
 Revision : G

COMMERCIAL IN CONFIDENCE - THIS DRAWING DOCUMENT IS CONFIDENTIAL AND MUST NOT BE USED FOR MANUFACTURE OR COPIED OR COMMUNICATED TO ANY OTHER PERSON OR COMPANY WITHOUT THE EXPRESS PERMISSION OF PENGUIN SHIPYARD INTERNATIONAL PTE LTD.